

Lichtlauf

## product description

Design Gerd Pfarré, Christoph Matthias & Team Lichtlauf 2015

Twelve handcrafted optical fibres give an impression of glowing reeds.

Consequently each stalk looks a little different.

MunichReeds can be placed in a lawn, in boggy soil, in a pond and also in shallow water.

Light source: LED approx. 3 W Light colour warm white or amber  
other light colours on request

Dimensions: housing 14x14x3,5 cm  
Length of the stalks up to approx. 150 cm

Each lamp is handcrafted and has its unique shape.

Due to the manual production process there might occur irregularities between the individual reeds.

By the influence of weather and temperature the reeds might bend

These are no product defects and therefore no reason for complaint or reclamation.

## enclosed

1 MunichReeds

1 Can Closure FDM with LED electronic control gear (ECG)

4 Terminals

## technical data

LED, total about 3 W, sec. max. 350mA



Type:  
outdoor light IP 67

## notes

operate light only with short-circuit-proof safety isolating transformer, power supply unit included in delivery



This light contains built-in LED lamps.  
Energy classes: A - A ++  
The lamp only can be exchanged by the manufacturer.

## safety note

Follow always the hints of this instruction for a safe assembly and use of these lights. Keep the assembly instruction for further questions.

The assembly and the electric supply must be done by an electric professional. Local installation regulations have to be respected.

The manufacturer accepts no liability for any damage due to improper use of the luminaire.

**Attention! Before working on the luminaire disconnect it from the mains.  
Also for cleaning, maintance and lamp change.**

Luminaires are only allowed to be used for the specified purpose. Interior lights may not be used in outside area. Luminaires may not be covered.

They may not be connected to power supply still they are packaged.

Lights with elctronic control gears (ECG) have to be operated with original ECGs.

The lamp change must be done by an competent professional.

Use only lamps with same type of construction, performance and voltage.

In case of damages, in particular of cable and socket, the luminare have to be shut off immediately. In case of damage on the mains cable it has to be changed by the Lichtlauf GmbH.

For malfunction call autorized personnel for troubleshooting.

Never repair it by yourself.

Through improper repair work may arise risk for the user.

Elements of plug and connection shall be free from traction and torque.

## care instructions

Disconnect the device from the power supply grid before cleaning.

The care of the luminaire is limited to the reeds.

Clean the stalks carefully with a humid and soft cloth.

**Important:**  
**Please don't use spiritus or alcohol containing products to avoid that the stalks get brittle.**  
**Do not use scouring agents or cleaning agents containing scouring agents.**

For heavier soiling we recommend a plastic cleaner.

## special notes

Keep plastic bags and small components away from children to avoid risks of suffocation or swallowing!



Dig a deepening for the base. Depth: approx. 15 cm.  
Besides another deepening for the can closure.

Put the lamp in the deepening and put the sleeve in the deepening besides that. Take care that the cable is strain relieved and lies loosely. The Cable must not be damaged by sharp-edged stones. The base and the can closure must be covered with gravel or soil

at the end.  
Pay attention that the stalks are not damaged by sharp edged stones etc.

The assembly and electric connection must be done by an electric professional.  
Attend the instructions of the can closure FDM manufacturer Friedel which is illustrated on the following pages.

Open the can closure, while holding the yellow cap and turning the black can body counter-clockwise. Cut as described in the instruction a close fit to one of the rubber sleeves. The size of the hole should be  $\frac{2}{3}$  of the cable diameter of your mains cable at maximum. Use a submersible water resistant mains cable. Otherwise the water might reach the inside of the can closure through the cable.

Clean the can closure as required and use enclosed cable lubricant to push the cable through the hole in the rubber sleeve.  
(Fig. 3) Push the mains cable approx. 15 cm through the rubber sleeve. Pay attention that the rubber sleeve does not get damaged.

Use the cable tie to seal up as shown in (Fig. 4)

Strip of approx. 8 cm from the outer insulation of the mains cable.

Strip of approx. 10 mm from the inner insulation of the connector and neutral connector

Use the terminals to connect them to the ECG in accordance to the colors (blue = neu-

tral connector, brown = connector). Open the lever of the free position on the terminal and push the strand into the terminal. Close the lever and control the strand fits firm in the terminal. Proceed as with leader and neutral leader.

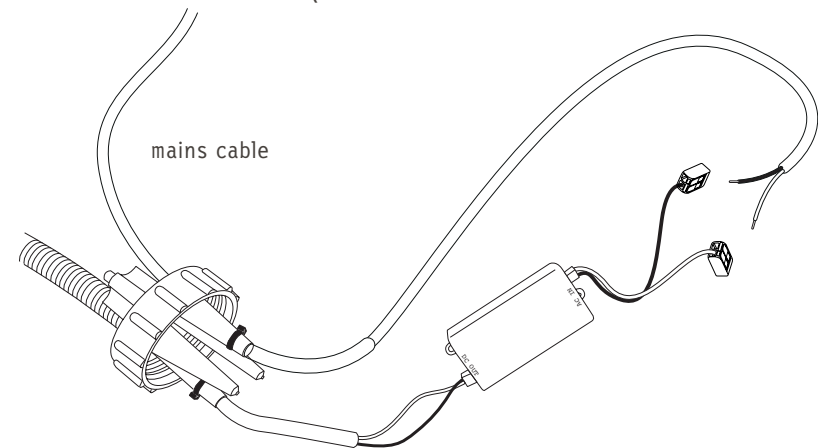
The secondary connection is already prefabricated on the ECG.

Before you close the can closure, grease the front end with the cable lubricant as described in the instruction in Fig. 5.

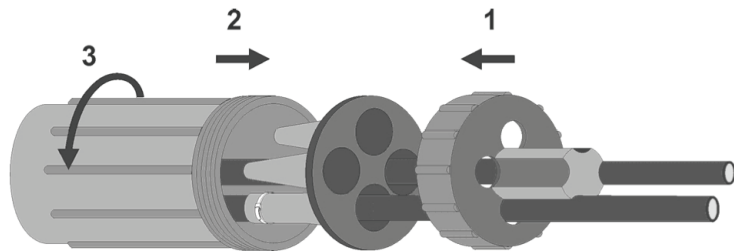
Close the can closure, while you turn the black can body clockwise against the cap. Close closure very tight and according to the torque information on the instructions.

Use the big cable tie to strain relieve mains cable and secondary cable. (Fig. 6)

The installation of the can closure is in the area of responsibility of the installer.



## The Friedl Can Closure FDM



- for control- and powercable up to 1000 volt
- easy for in-line and branch-off connections
- for direct buried and aerial cable connections
- for all type of cables from  $\varnothing$  7 - 25 mm (FDM 2)
- 4 entries, no additional tools or special skills needed

Type		Box
FDM 1	4x $\varnothing$ 5-14 mm	10 p
FDM 2	4x $\varnothing$ 7-25 mm	6 p

FDM 2: Box incl. 1 Set closing tool

**ABSOLUTE SEAL (IP 68) - REOPENABLE - UV-RESISTENT**

**EASY - FAST - RELIABLE - AFFORDABLE**

Approved by the Austrian Electrotechnology Institute OEVE/VDE (IM 22, IP 68)  
Used by the Austrian Telecom and many countries.  
Protected by patent law, ISO 9001, EU-Norm 50.393:2006

**Producer:** FRIEDL GmbH, A-2201 Hagenbrunn  
Tel.: 02246/46551 Fax.: 02246/4692  
email: office@friedl-net.com

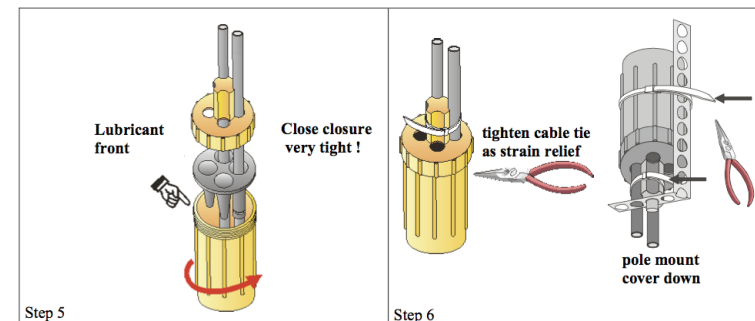
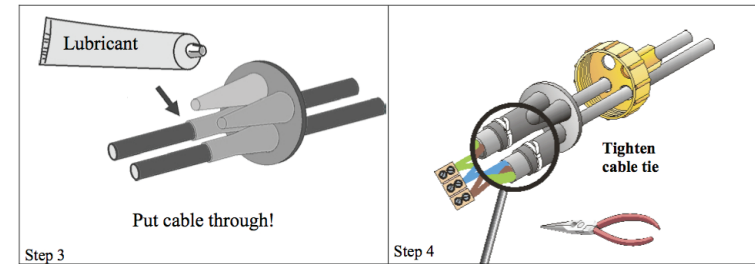
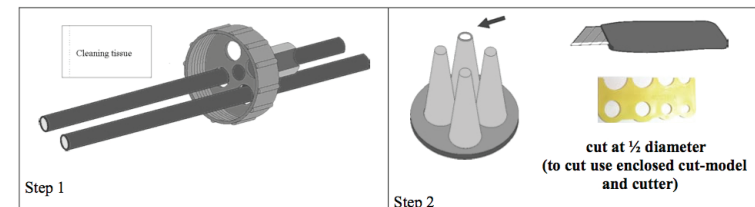
The professional installation of the closure is in the responsibility of the installation company.

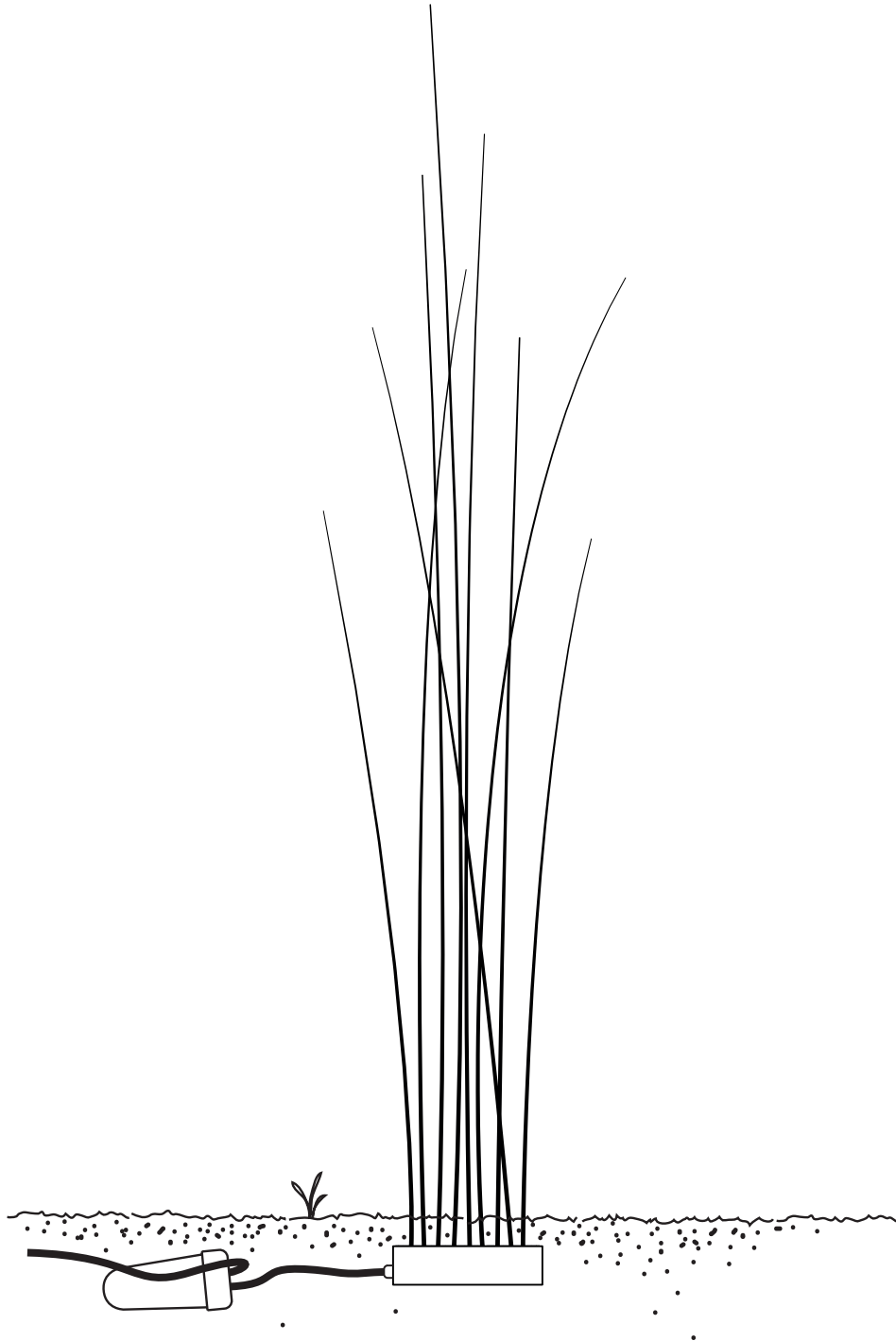
**The FRIEDL Can Closure FDM is such easy to install:**

### Connect and Branch Closures for Electropower- and Telecom cable

**Types:** FDM 1 MNr.: 2-000-000-591  
FDM 2 MNr.: 2-000-018-886

**Steps:**





The base and the can closure must now be covered with gravel or soil.  
Pay attention that the stalks are not damaged by sharp edged stones etc.

**Important:**

**If Munich Reeds shall be put in a pond and thus fully in the water (max. depth 20 cm), it must be assured that the can closure and mains cable is outside the water!**

Do not operate MunichReeds in bathing waters.

**Lichtlauf GmbH**

Sonnentaustraße 12  
D - 80995 Munich

T +49(0)89.30905274-0  
F +49(0)89.30905274-9

[info@lichtlauf.de](mailto:info@lichtlauf.de)  
[www.lichtlauf.de](http://www.lichtlauf.de)